

Community Impact Report 2017

**Thank you for
your support
this year!**

As we approach this season of giving, we are so grateful for you and the commitment you have shown to improve the lives of young children and families in Nash and Edgecombe counties.

Please take a moment to review our [Community Impact Report](#). We invite you to share it with your friends and networks.

This year **11,102 children** benefited from parent education and support programs and **821 children** received DEPC child care scholarships and NC Pre-K. The need and demand for DEPC services continues to

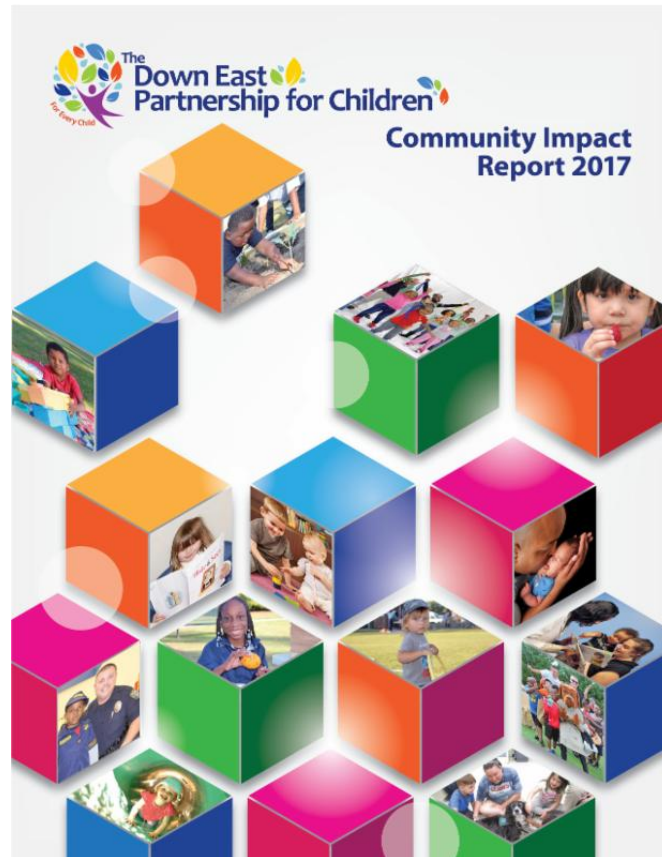
increase as we serve more and more of our young children with fewer resources. Children and families in our community are counting on us. Can we count on you to make a donation this year?

Together we can make a difference; together we can launch every child as a healthy, lifelong learner by the end of the third grade. Thank you for all you do to improve the quality of life for kids and families.

Sincerely,



Henrietta Zalkind
DEPC Executive Director



DONATE

Giving Tuesday Is Nov. 28

#GivingTuesday is a global day of giving fueled by the power of social media and collaboration. Celebrated on the Tuesday following Thanksgiving (in the U.S.) and the widely recognized shopping events Black Friday and Cyber Monday, #GivingTuesday kicks off the charitable season, when many focus on their holiday and end-of-year giving. Please remember DEPC this Giving Tuesday.

Black Friday. Cyber Monday.
#GIVINGTUESDAY™
November 28, 2017

DEPC is qualified as a charitable organization under Section 501 (c)(3) of the Internal Revenue Code. Contributions to DEPC are tax-deductible to the extent permitted by law.

Stay Connected

